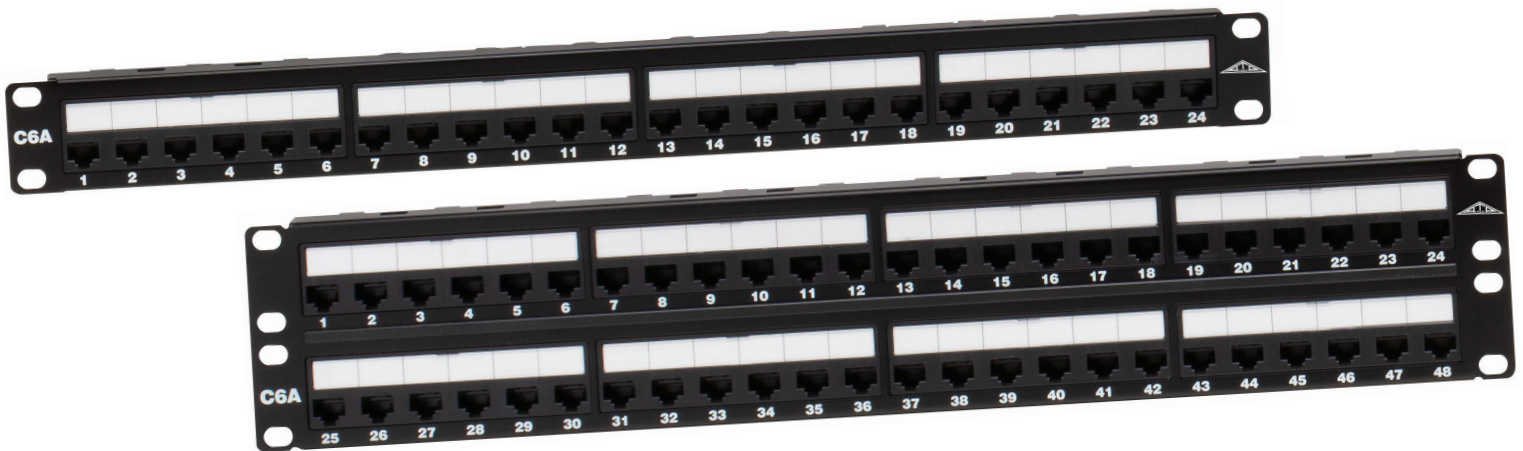


New Allen Tel Category 6A 10Gb Patch Panels

To meet the expanding demand for Category 6A UTP applications, Allen Tel broadens its line of 10Gb solutions with new 24 and 48 port patch panels



Part Number	Part Description	Graybar ID
AT10GPNL-24RM	24 Port Loaded 10Gb Cat 6A Patch Panel, 1RU	26428419
AT10GPNL-48RM	48 Port Loaded 10Gb Cat 6A Patch Panel, 2RU	26428420

- Designed to exceed ANSI/TIA 568.2-D Category 6A standards
- Supports IEEE 802.3an standard for 10 Gigabit Ethernet over UTP cable
- Tested and approved for Category 6A channel compliance
- Supports IEEE 802.3at/bt Power over Ethernet (PoE) applications
- 110 termination - Universal wiring for either 568A or 568B
- Includes heavy duty cable management bar
- Hinged label holder for easy label changes
- Panels include port identification strip, mounting hardware, cable ties
- UL 94V-0 fire retardant plastic
- UL & CSA Listed
- RoHS Compliant



Look for local inventories at Graybar locations across the U.S.
Call Graybar for additional product details and literature.
Or visit www.allentel.com.