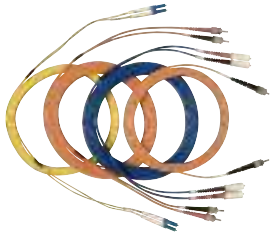
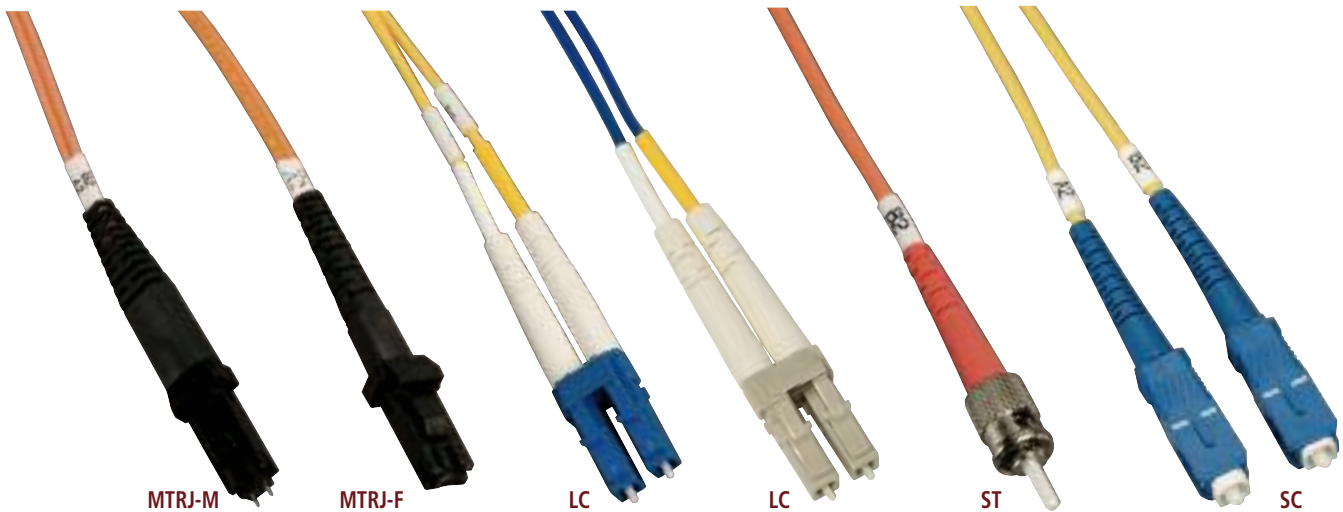


# Patch Cords

## Fiber Optic Cable Assemblies



- Full line of high quality single mode and multimode fiber optic cable assemblies
- All cables are 100% tested for insertion loss and back reflection
- Available in industry standard lengths in meters
- Individual removable dust covers
- Custom configurations available
- Pigtailed are available upon request



MTRJ-M

MTRJ-F

LC

LC

ST

SC

## GB S C 2 - D 4 - 03

### Connector to Connector Configurations

FC2	FC to FC
FCC	FC to SC
FCT	FC to ST
LC2	LC to LC
LCC	LC to SC
LCT	LC to ST
MF2	MTRJ Female to MTRJ Female
MFC	MTRJ Female to SC
MFL	MTRJ Female to LC
MFT	MTRJ Female to ST
MM2	MTRJ Male to MTRJ Male
MMC	MTRJ Male to SC
MMF	MTRJ Male to MTRJ Female
MMT	MTRJ Male to ST
SC2	SC to SC
ST2	ST to ST
STC	ST to SC

### Length

01 - 1 Meter	08 - 8 Meter
02 - 2 Meter	09 - 9 Meter
03 - 3 Meter	10 - 10 Meter
04 - 4 Meter	15 - 15 Meter
05 - 5 Meter	20 - 20 Meter
06 - 6 Meter	25 - 25 Meter
07 - 7 Meter	30 - 30 Meter

### Fiber

- 1 - Single Mode 9/125 OS1 (Yellow Jacket)  
Insertion loss < 0.2dB
- 2 - Multimode 62.5/125 OM1 (Orange Jacket)  
Insertion loss < 0.3dB
- 3 - Multimode (Only) 50/125 OM2 (Blue Jacket)  
Insertion loss < 0.3dB
- 4 - Multimode (Only) 50/125 850nm OM3  
laser-optimized 10Gb (Aqua Jacket)  
Insertion loss < 0.2dB
- 5 - Multimode (Only) 50/125 850nm OM4  
laser-optimized 10Gb  
Insertion loss < 0.2dB

### Cable Type

- S - Simplex
- D - Duplex

## Ordering Example

### GBSC2-D4-03

10Gb SC to SC duplex 50/125 microns laser-optimized multimode - 3 Meters