

Cat 5e Complete Product Line

Category 5e, 12 Port Patch Box

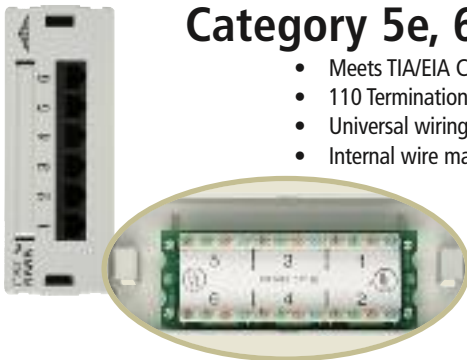
- 110 Termination
- Universal wiring for either 568A or 568B
- Multiple cable entries
- Hinged design for easier termination
- ID strips with removable window
- Includes GB89D mounting bracket



Part Number	Part Description	Std. Pkg. Qty.	Std. Ctn. Qty.
AT55B-12P	12 Port Cat 5e Patch Box	1	18

Category 5e, 6 Port Patch Box

- Meets TIA/EIA Category 5e standard
- 110 Termination
- Universal wiring for either 568A or 568B
- Internal wire management
- Designation strips with protective cover
- Includes adhesive tape & mounting screws

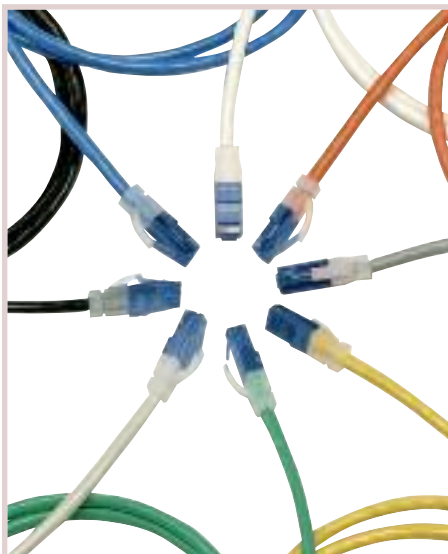


Part Number	Part Description	Std. Pkg. Qty.	Std. Ctn. Qty.
AT55B-6P	6 Port Cat 5e Patch Box	1	40

Cat 5e Patch Cords

Category 5e Patch Cords

- Exceeds TIA/EIA Category 5e standard (Wired 568B)
- 100% tested and approved for Category 5e channel compliance
- Custom colors and lengths available upon request
- Snagless
- Variety of colors
- 155 MHz

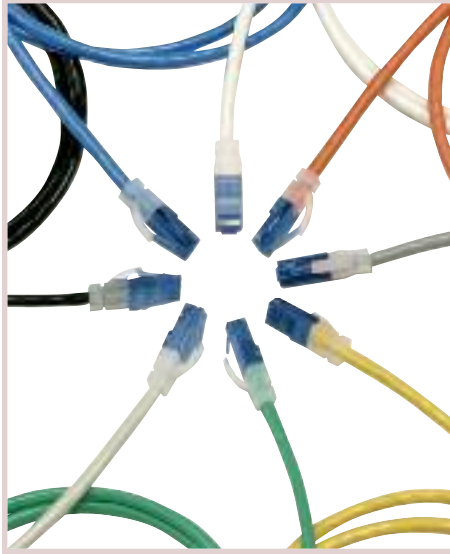


Part Number	Part Description	Std. Pkg. Qty.	Std. Ctn. Qty.
AT1501EV-XX	Cat5e Patch Cord 1ft	25	500
AT1502EV-XX	Cat5e Patch Cord 2 ft	25	400
AT1503EV-XX	Cat5e Patch Cord 3 ft	25	300
AT1504EV-XX	Cat5e Patch Cord 4 ft	25	300
AT1505EV-XX	Cat5e Patch Cord 5 ft	25	250
AT1507EV-XX	Cat5e Patch Cord 7 ft	25	200
AT1510EV-XX	Cat5e Patch Cord 10 ft	25	150
AT1514EV-XX	Cat5e Patch Cord 14 ft	25	100
AT1515EV-XX	Cat5e Patch Cord 15 ft	1	100
AT1518EV-XX	Cat5e Patch Cord 18 ft	1	80
AT1520EV-XX	Cat5e Patch Cord 20 ft	1	70
AT1525EV-XX	Cat5e Patch Cord 25 ft	1	65
AT1550EV-XX	Cat5e Patch Cord 50 ft	1	30
AT15100EV-XX	Cat5e Patch Cord 100 ft	1	15

XX Colors: WH-White, YL-Yellow, BU-Blue, RD-Red, GY-Grey, I-Ivory, BK-Black, GN-Green, OR-Orange, P-Purple

Category 5e Patch Cords

- Exceeds TIA/EIA Category 5e standard (Wired 568B)
- 100% tested and approved for Category 5e channel compliance
- Custom colors and lengths available upon request
- Snagless
- Variety of colors
- 155 MHz



Part Number	Part Description	Std. Pkg. Qty.	Std. Ctn. Qty.
AT1501EV-XX	Cat5e Patch Cord 1ft	25	500
AT1502EV-XX	Cat5e Patch Cord 2 ft	25	400
AT1503EV-XX	Cat5e Patch Cord 3 ft	25	300
AT1504EV-XX	Cat5e Patch Cord 4 ft	25	300
AT1505EV-XX	Cat5e Patch Cord 5 ft	25	250
AT1507EV-XX	Cat5e Patch Cord 7 ft	25	200
AT1510EV-XX	Cat5e Patch Cord 10 ft	25	150
AT1514EV-XX	Cat5e Patch Cord 14 ft	25	100
AT1515EV-XX	Cat5e Patch Cord 15 ft	1	100
AT1518EV-XX	Cat5e Patch Cord 18 ft	1	80
AT1520EV-XX	Cat5e Patch Cord 20 ft	1	70
AT1525EV-XX	Cat5e Patch Cord 25 ft	1	65
AT1550EV-XX	Cat5e Patch Cord 50 ft	1	30
AT15100EV-XX	Cat5e Patch Cord 100 ft	1	15

XX Colors: WH-White, YL-Yellow, BU-Blue, RD-Red, GY-Grey, I-Ivory, BK-Black, GN-Green, OR-Orange, P-Purple

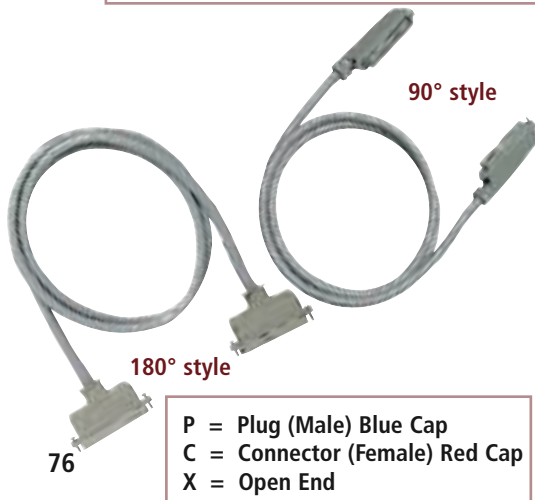
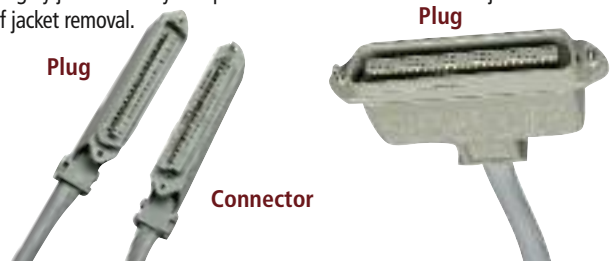
Connectorized Cables

Allen Tel Products Inc. offers a complete line of plug-in connector cables. They are available in 25 pair with various plug, connector and length combinations. Conductors are 24 AWG bare solid annealed copper wire. Polyvinyl chloride is used as insulation over the conductors. It is semi-rigid heat resistant and is resistant to abrasion and cold flow. Fully color coded band marked with individual pairs twisted for ease of identification. The color band on each conductor matches body insulation color of matching conductor.

Electrical Characteristics

Frequency MHz	Attenuation dB/100m	Next dB (worst pair)	Impedance Ohms
0.256	1.3	/	/
0.512	1.8	/	/
0.772	2.2	43	/
1.0	2.8	41	100±15
4.0	5.8	32	100±15
5.0	8.5	27	100±15
10.0	9.7	26	100±15
16.0	13.1	23	100±15

Standard telephone industry color code is incorporated throughout. Polyvinyl chloride grey jacket with nylon ripcord inserted between core and jacket for ease of jacket removal.



Part Number	Part Description	Std. Pkg. Qty.	Std. Ctn. Qty.
25-3-CC-XX-GY	90° Connector at both ends	1	1
25-3-CX-XX-GY	90° Connector at one end only	1	1
25-3-PC-XX-GY	90° Plug at one end, 90° connector at one end	1	1
25-3-PP-XX-GY	90° Plug at both ends	1	1
25-3-PX-XX-GY	90° Plug at one end only	1	1

XX Length in Feet: 5, 10, 15, 20, 25, 30, 40, 50, 75, 100, 150, 200

Part Number	Part Description	Std. Pkg. Qty.	Std. Ctn. Qty.
25-3-PP-XX-180	Cable to panel, 180° plug at each end	1	1
25-3-PX-XX-180	Cable to panel, 180° plug at one end only	1	1

XX Length in Feet: 5, 10, 15, 20, 25, 30, 40, 50, 75, 100, 150, 200. See pages 88 thru 90 for 25 pair adapter accessories.