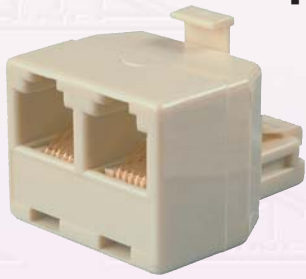
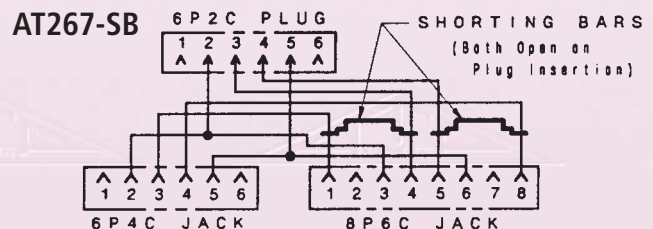
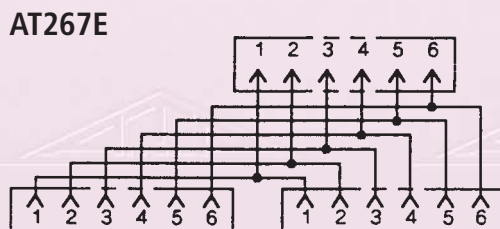
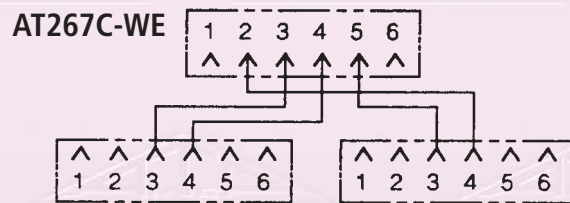
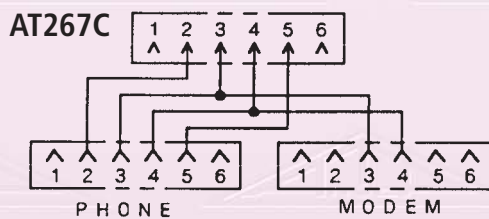
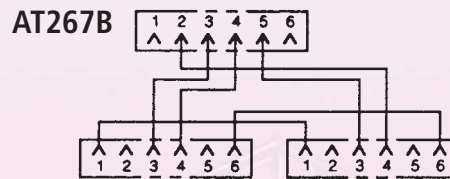


Telephone Accessories

"T" Adapter



- The AT267B is e/w two 4-conductor, 6-position jacks and one 4-conductor, 6 position plug wired for connecting two telephones and/or ancillary devices to separate outside lines through a single 4-contact modular jack wired for terminating two lines. Ideal for use in semi-private hospital rooms or for adding a second line
- The AT267C is e/w one 2-conductor, 6-position jack for modem, one 4-conductor, 6-position jack for voice transmission and one 4-conductor, 6-position plug with the tip and ring bridged to both jacks
- Designed to combine voice and data transmission through a single modular jack
- The AT267C-WE is e/w two 2-conductor, 6-position jacks and one 4-conductor, 6-position plug. Designed to split two telephone lines from a single modular jack to two individual modular jacks
- The AT267E is e/w two 6-conductor, 6-position jacks and one 6-conductor, 6-position plug. Provides connection for two 6-conductor, 6-position line cords wired to a single 6-conductor, 6-position modular plug
- The AT267-SB is e/w one 4-conductor, 6-position jack, one 8-conductor jack with shorting bars on pins 1-4 and 5-8 and a 4-conductor, 6-position plug. Designed to permit quick connection of one telephone and one automatic dialer to the same line without changing the existing installation
- UL Listed and CSA Listed



Part Number	Part Description	Std. Pkg. Qty.	Std. Ctn. Qty.
AT267B	"T" adapter Ivory	1	100
AT267C	"T" adapter Ivory	1	100
AT267C-WE	"T" adapter Ivory	1	100
AT267E	"T" adapter Ivory	1	100
AT267-SB	"T" adapter Ivory	1	100